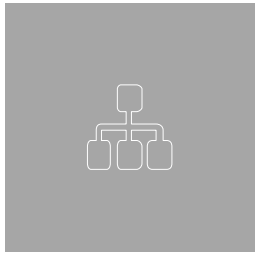


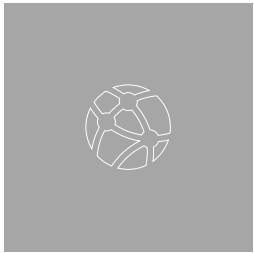
1



2



3



4



5

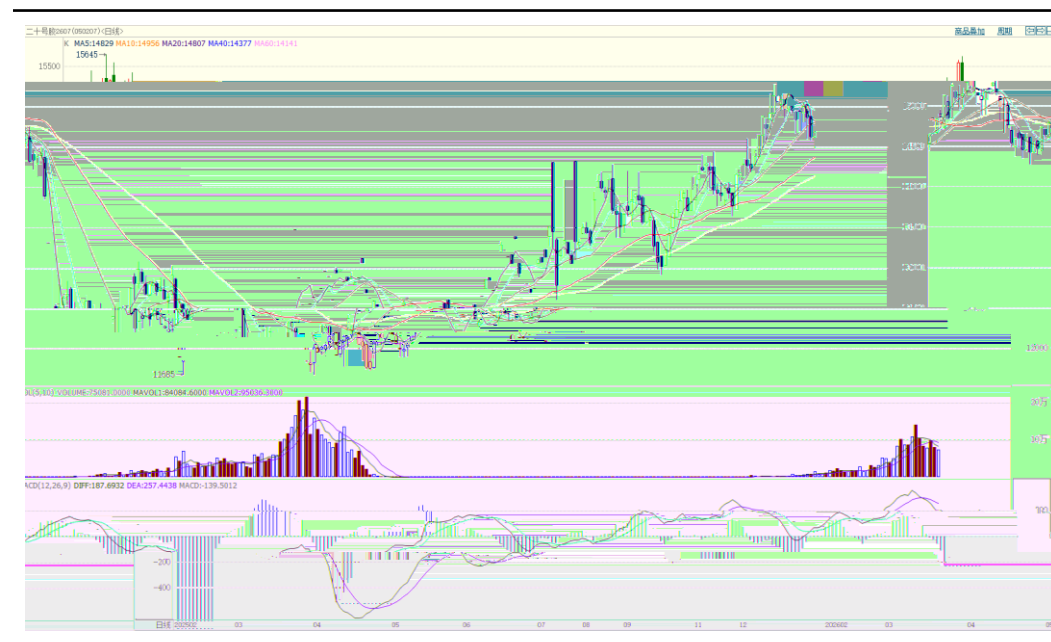
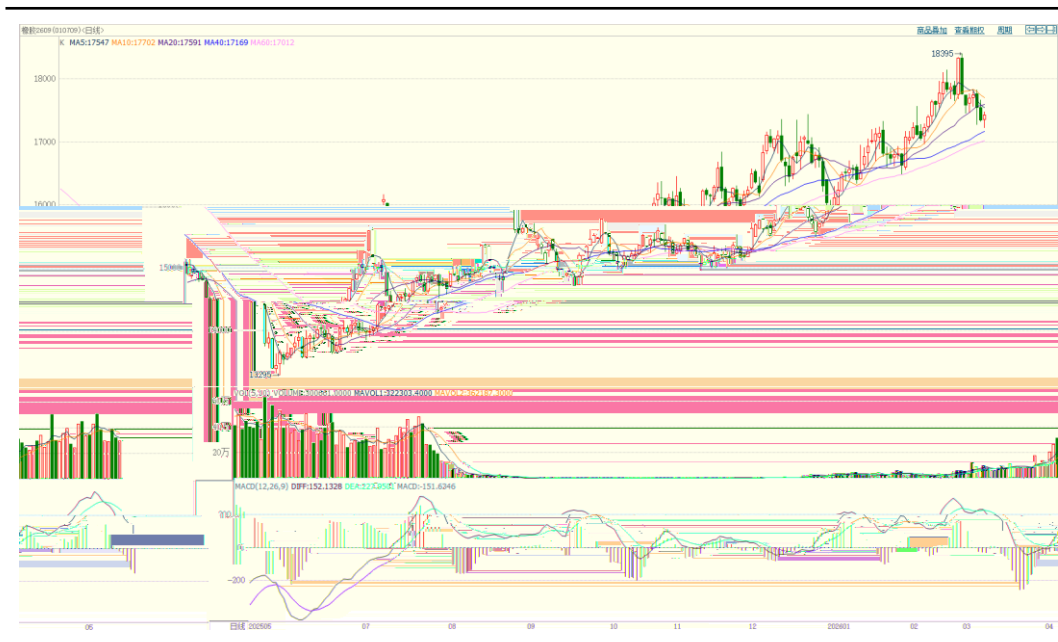


ru2609

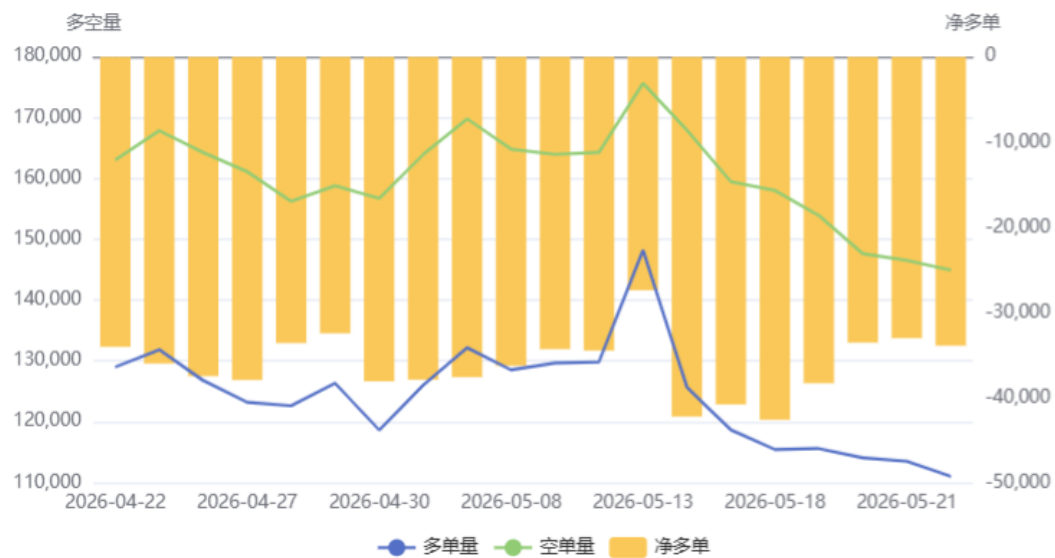
17150-17750

nr2607

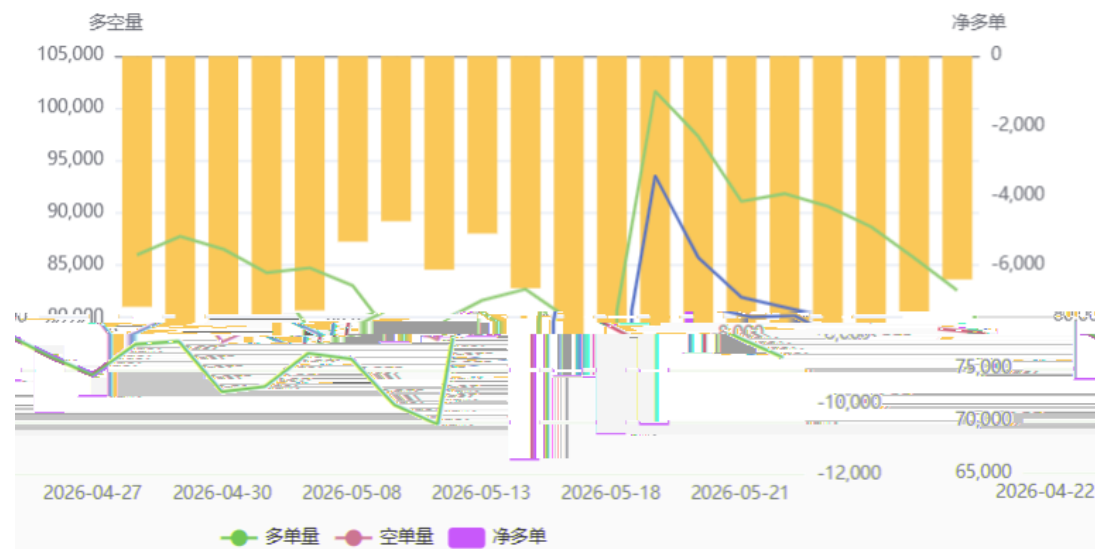
14350-15000



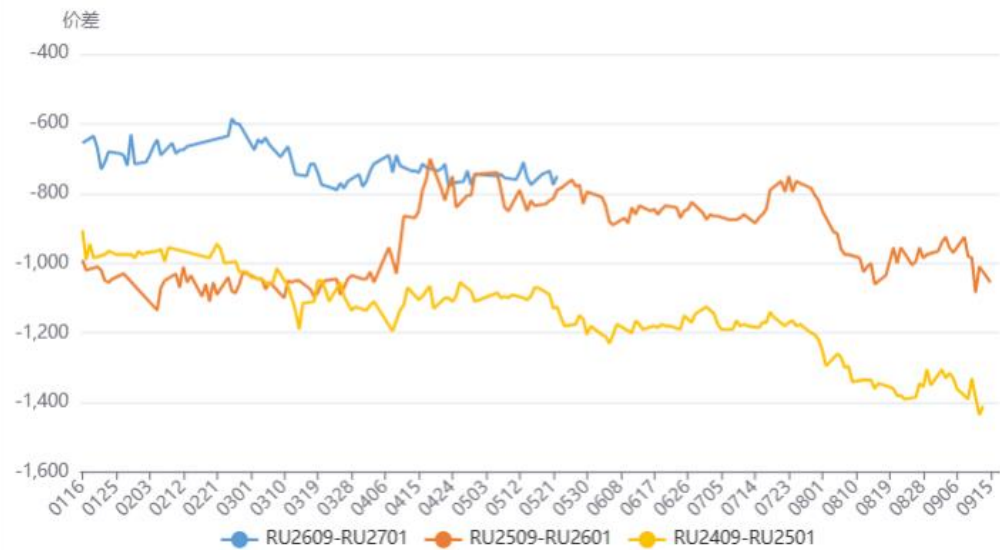
天然橡胶(RU)前20持仓量变化



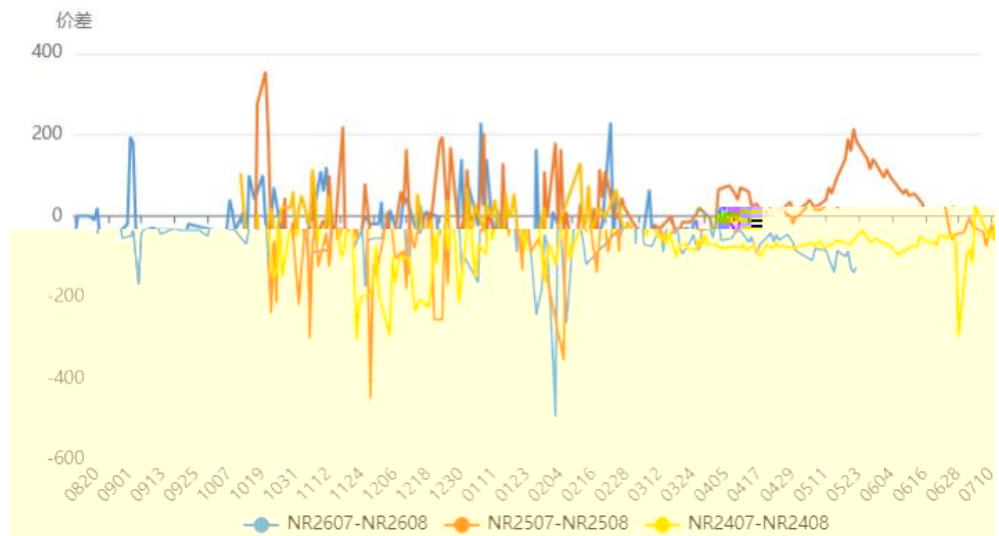
20号胶(NR)前20持仓量变化



RU09合约与RU01合约季节价差



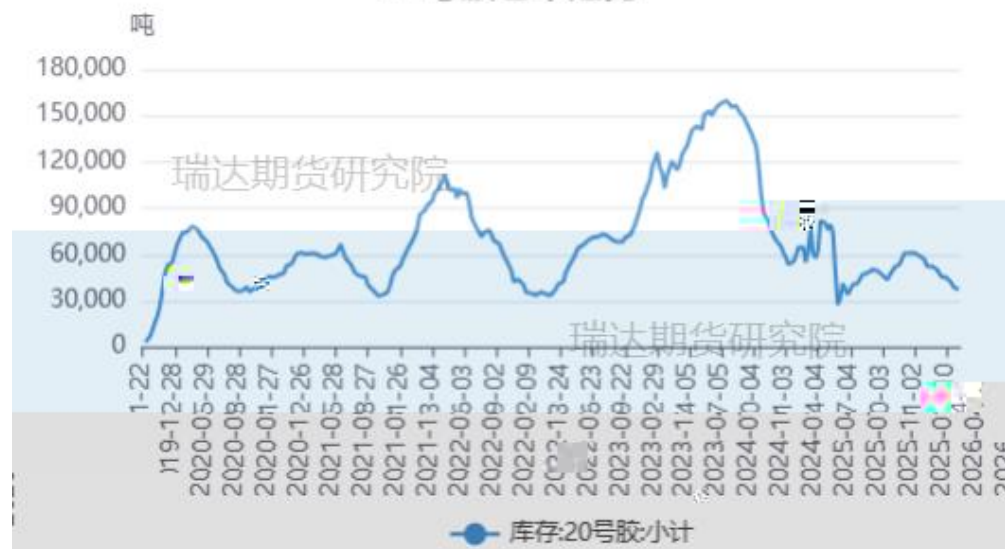
NR07合约与NR08合约季节价差

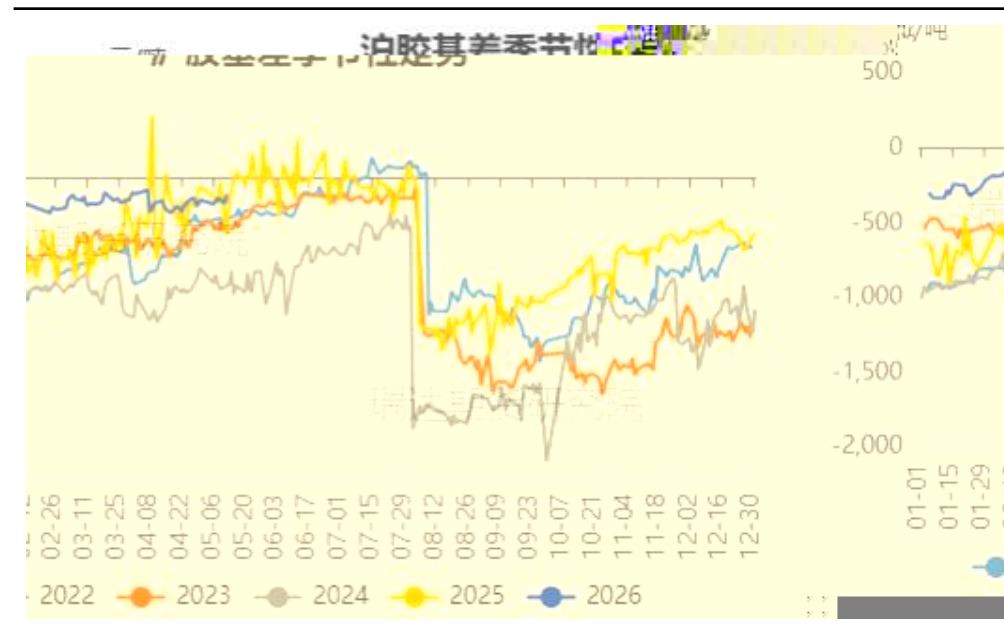
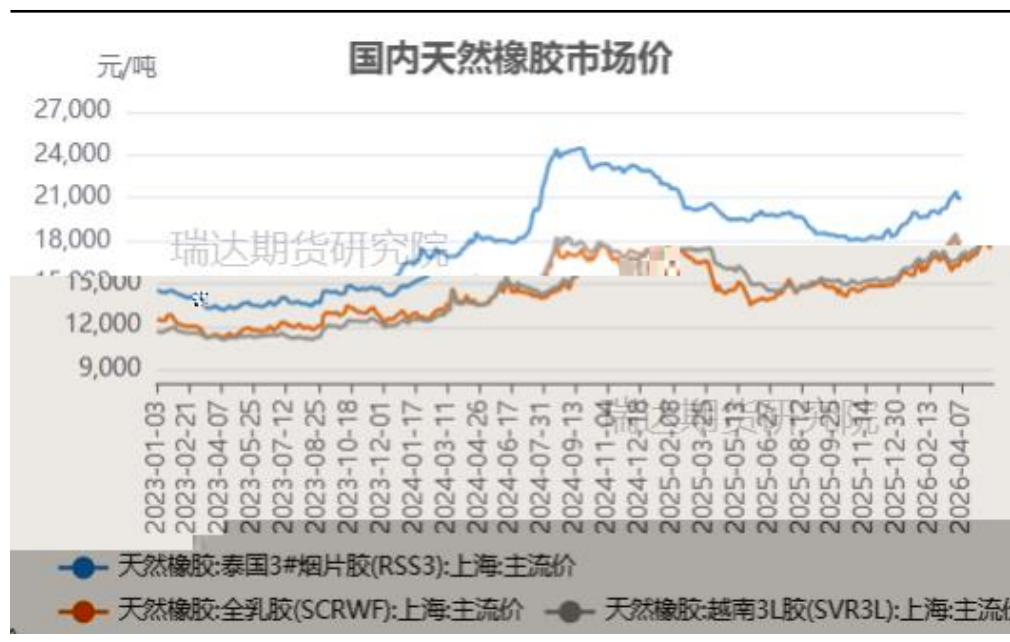


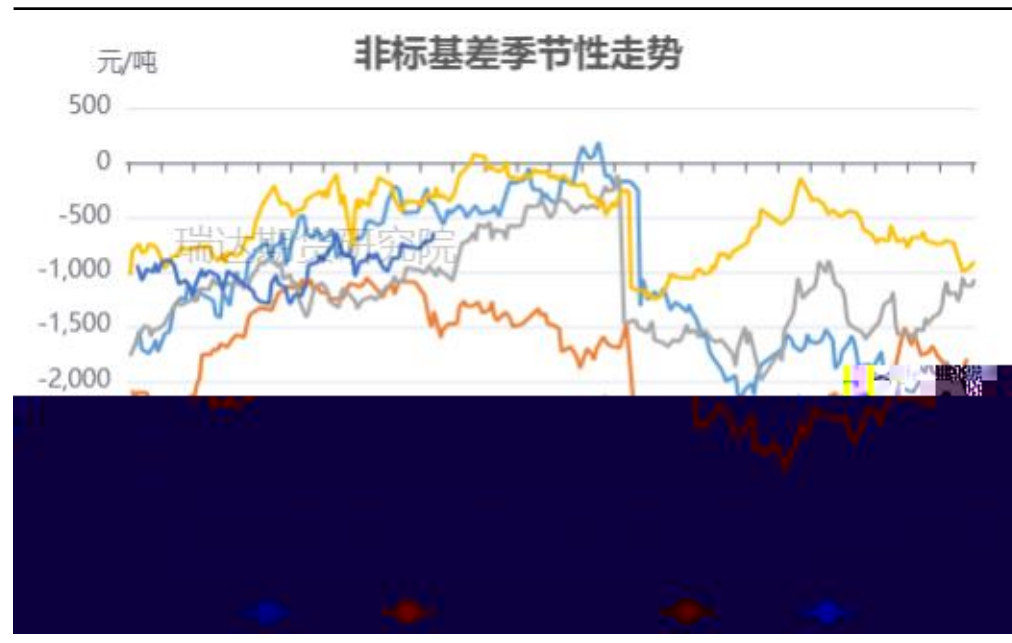
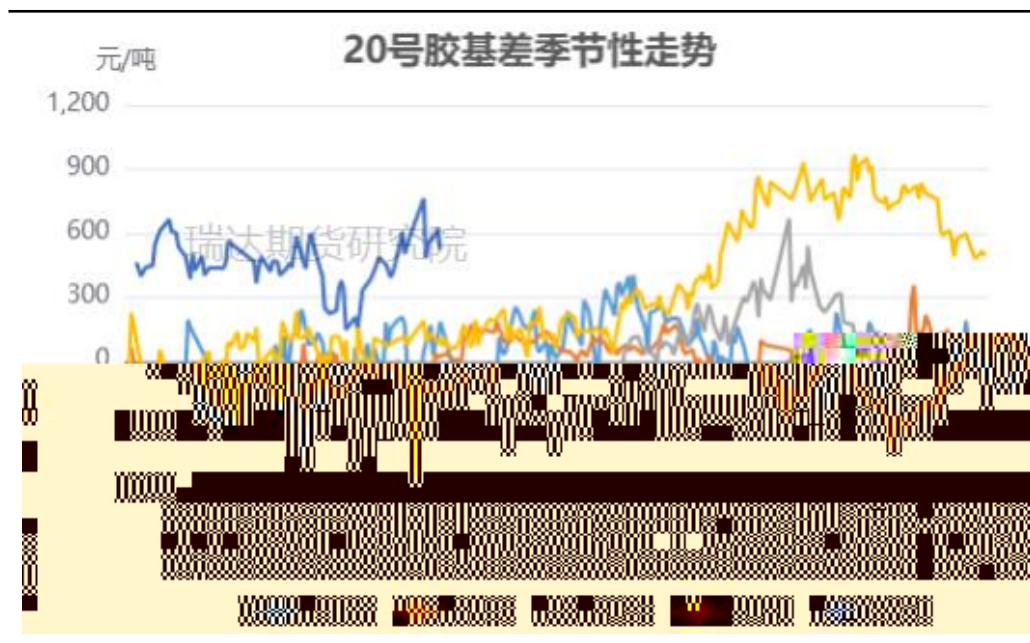
沪胶期价与仓单走势对比



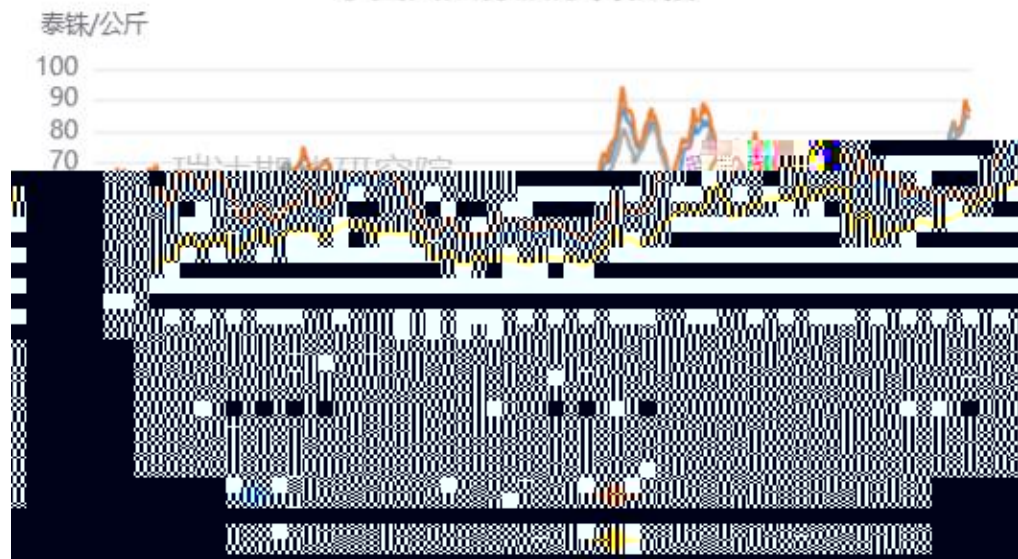
20号胶仓单走势



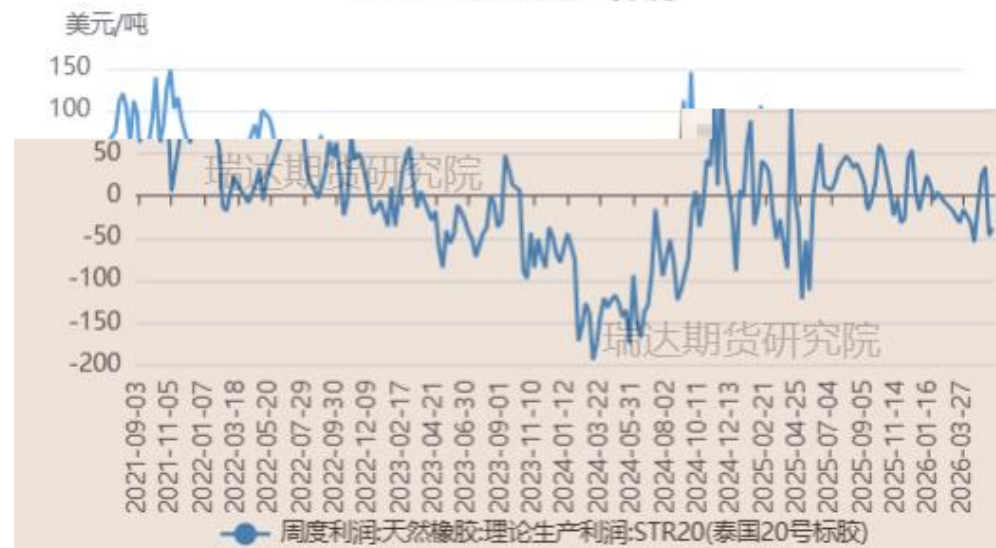




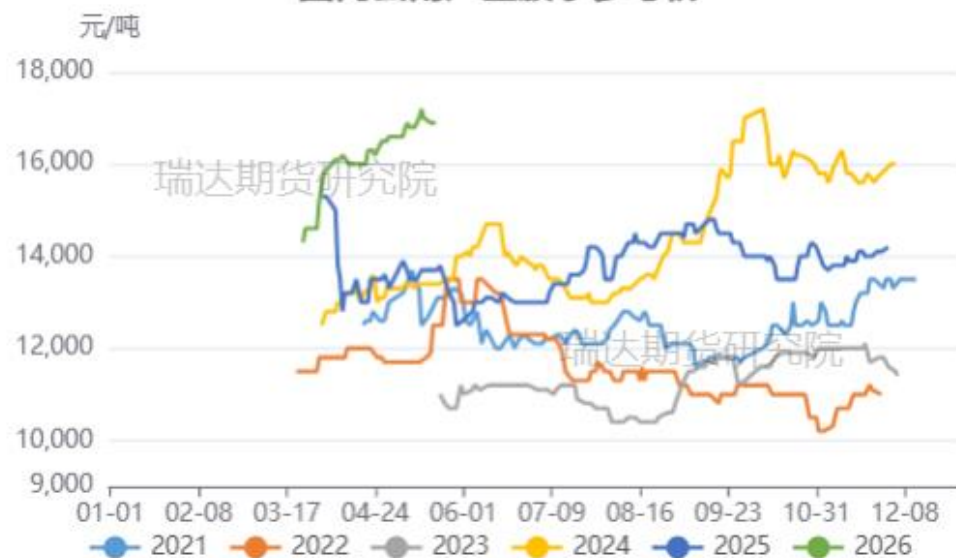
泰国天然橡胶原料价格



STR20理论生产利润

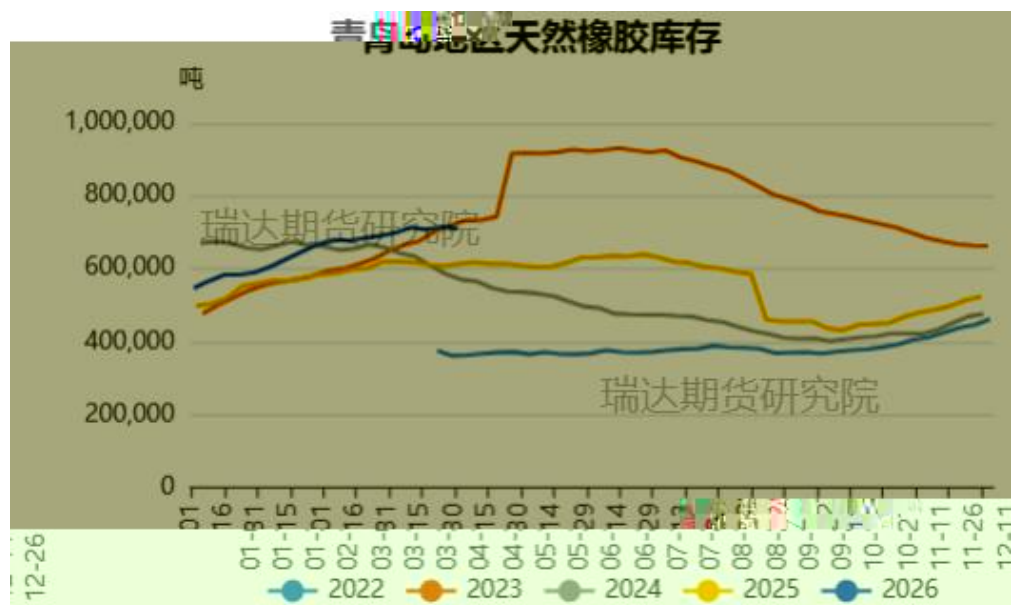


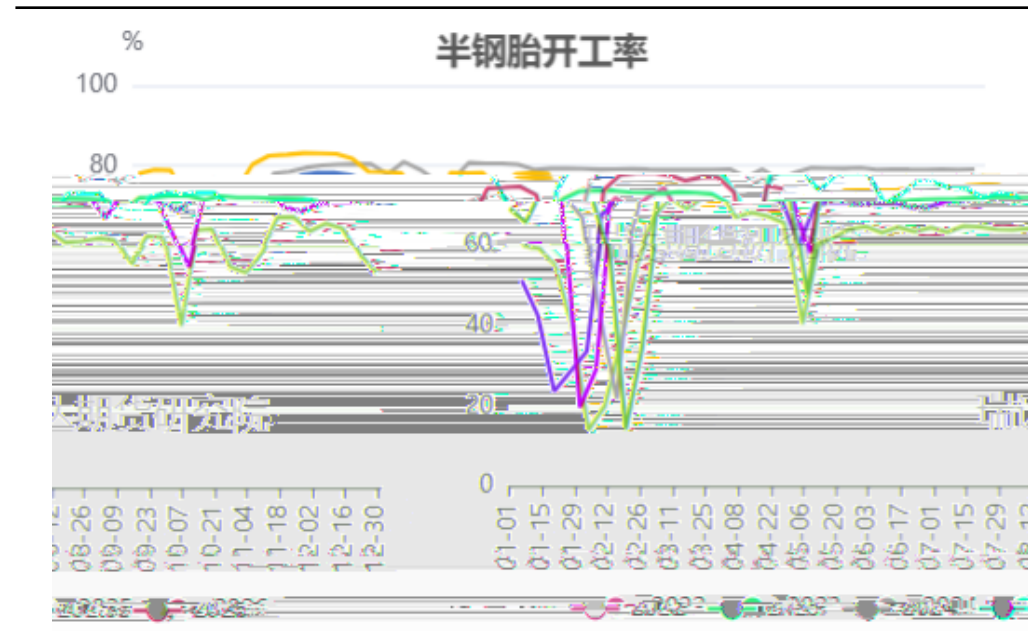
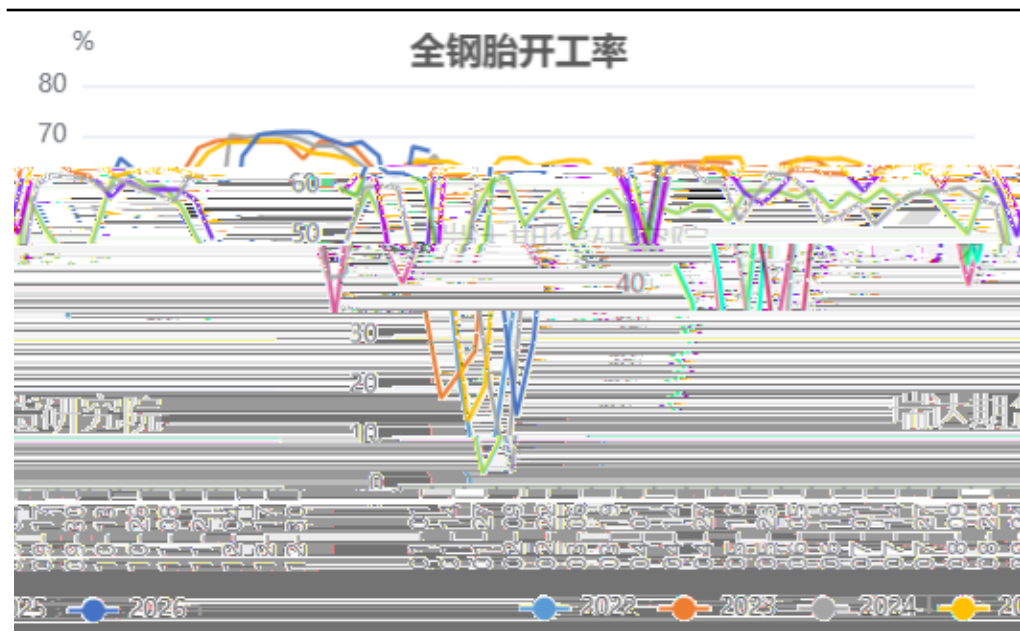
国内云南产区胶水参考价

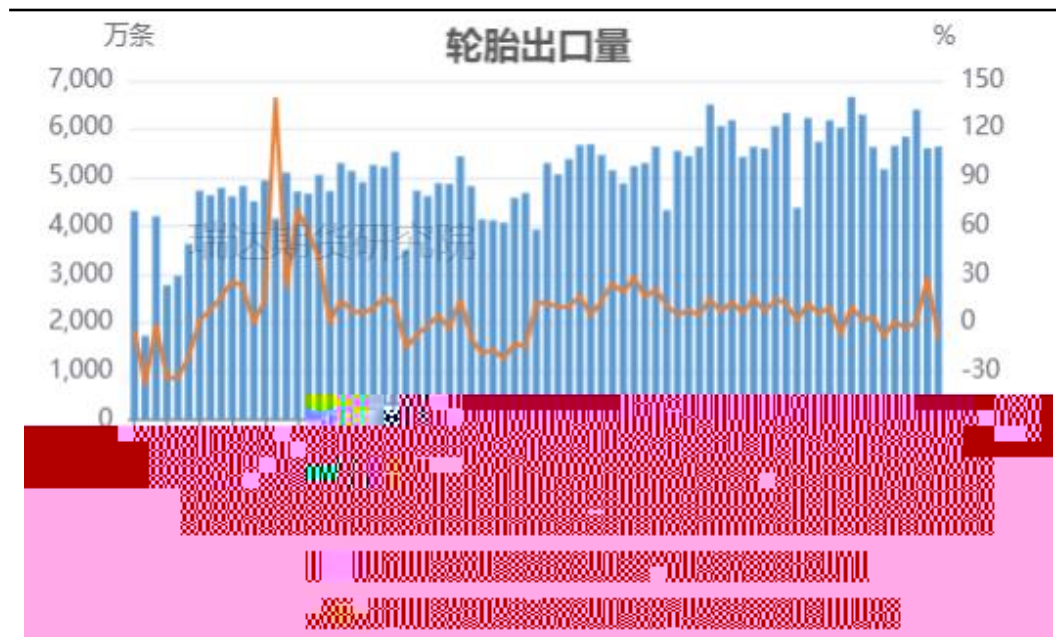


国内海南产区新鲜胶乳参考价









重卡月度销量

